



MONTHLY MEMBERSHIP PROGRESS REPORT

District 410 D

Results as of: 5/31/2014

GMT: Joachim Kastner

LOCATION REP OF SOUTH AFRICA

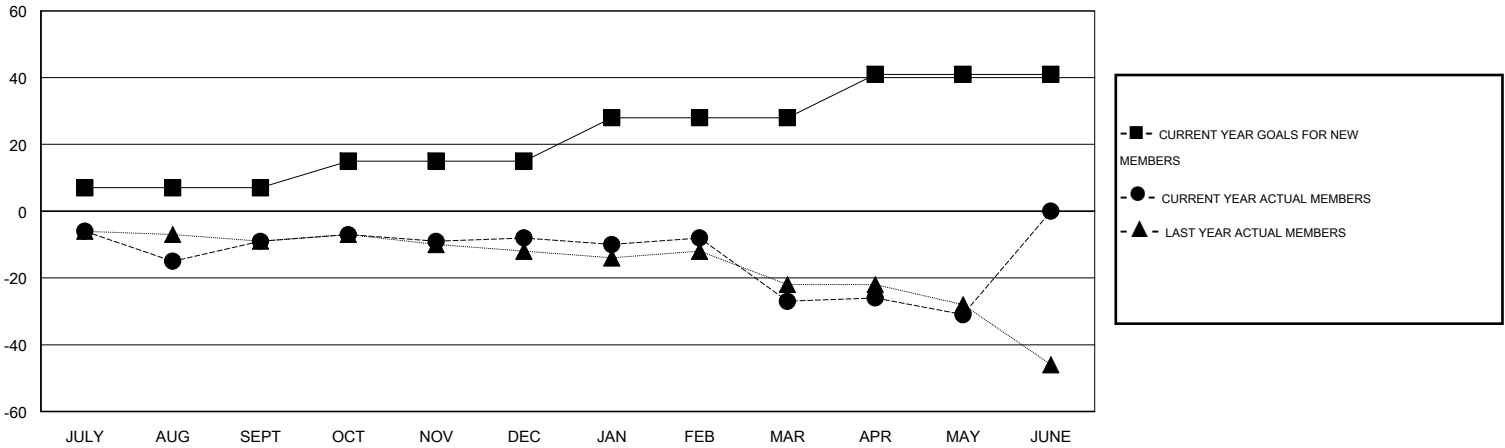
GMT CA 6-Af

| Clubs | | | | | Members | | | | |
|-----------------------|---------------|------------------|----------------------|----------------------|-----------------------|-----------------|----------------------------|------------------------|----------------------|
| RESULTS FOR 2013-2014 | | | | | RESULTS FOR 2013-2014 | | | | |
| QUARTER | NEW CLUB GOAL | ACTUAL NEW CLUBS | ACTUAL DROPPED CLUBS | ACTUAL NET GAIN/LOSS | QUARTER | NEW MEMBER GOAL | ACTUAL TOTAL MEMBERS ADDED | ACTUAL DROPPED MEMBERS | ACTUAL NET GAIN/LOSS |
| JULY/AUG/SEPT | 0 | 0 | 0 | 0 | JULY/AUG/SEPT | 7 | 15 | 24 | -9 |
| OCT/NOV/DEC | 0 | 0 | 0 | 0 | OCT/NOV/DEC | 8 | 10 | 9 | 1 |
| JAN/FEB/MAR | 0 | 0 | 0 | 0 | JAN/FEB/MAR | 13 | 12 | 31 | -19 |
| APR/MAY/JUNE | 0 | 0 | 1 | -1 | APR/MAY/JUNE | 13 | 4 | 8 | -4 |

GOALS AND ACTUAL NEW CLUBS CUMULATIVE



GOALS AND ACTUAL MEMBERS CUMULATIVE



| | | |
|------------------------|---|----------------------------|
| DROPPED CLUBS: 1 | 14 CLUBS OF 30 ADDED 1 OR MORE NEW MEMBERS | GENDER DISTRIBUTION |
| | | MALE 228 (64.77%) |
| | | FEMALE 124 (35.23%) |
| DROPPED MEMBERS | CLICK HERE FOR HEALTH ASSESSMENT DATA | FAMILY UNIT MEMBERS 116 |
| DECEASED 0 | | HEAD OF HOUSEHOLD 54 |
| CLUB CANCELLED 4 | | NON-HEAD OF HOUSEHOLD 62 |
| OTHER 68 | | |
| TOTAL 72 | | |